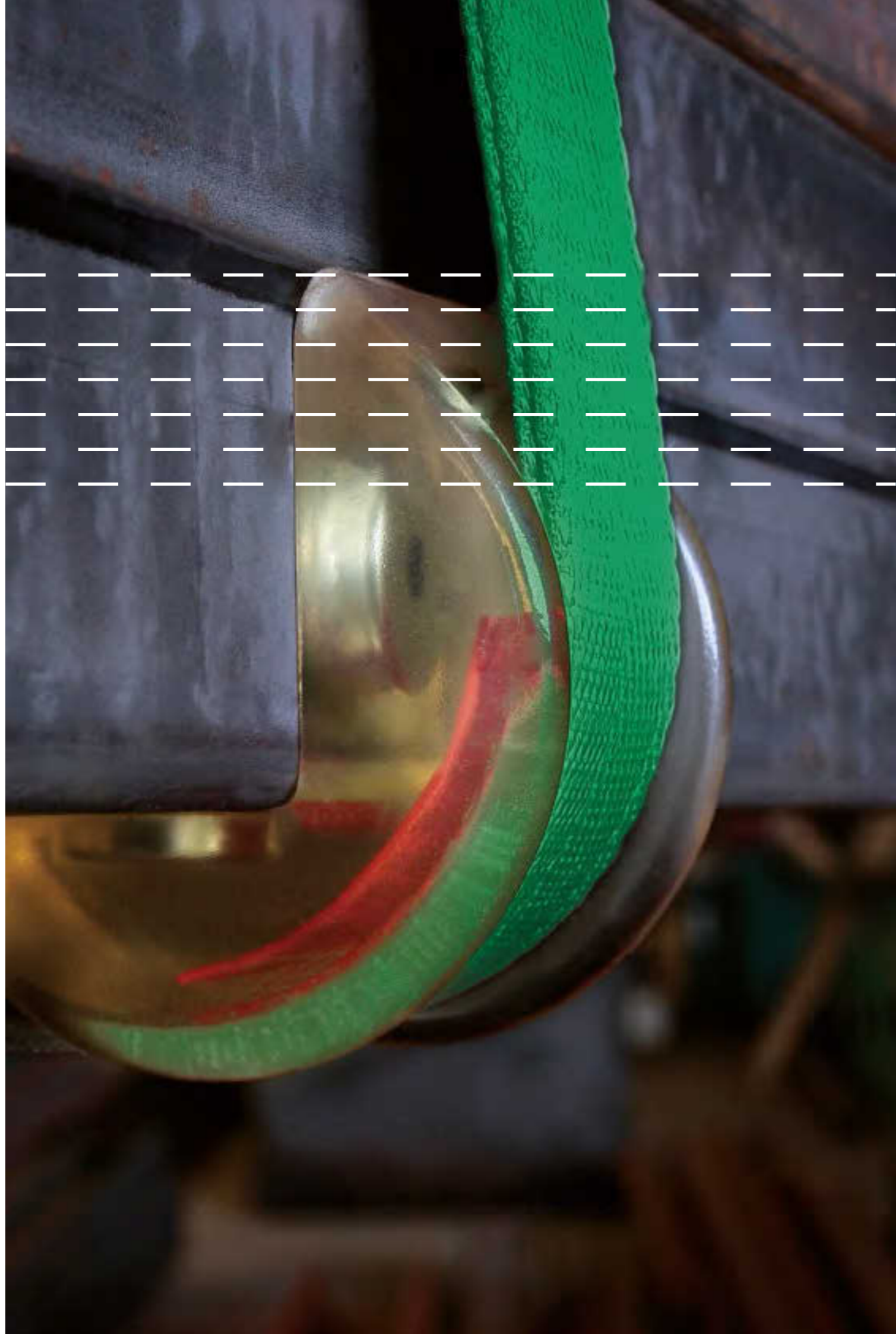


SpanSet secutex®

01

Lifting
Buffer pad
Lifting equipment





secutex edge protector

If the load has sharp edges or has a rough surface, suitable abrasion or edge protection must be used. secutex edge protectors are easy to handle and flexible to use. The optional version with magnets means that the edge protectors are easy to place on magnetic loads. Furthermore, the secutex edge protection drastically extends the lifespan of the load lifting accessory.

When attaching with chains or cables, the surfaces and edges of the load must also be considered as „sharp edges“ as they can result in damage to the lifting cable.

A „sharp edge“ exists whenever the edge radius („r“) is smaller than the Diameter („d“) of the cable or the chain.

secutex edge protectors provide protection for the load and lifting accessory. secutex consists of an incredible polyurethane elastomer with particularly-impressive physical and chemical properties:

High structural performance

As opposed to other chemical products, secutex offers extreme tear-resistance. This means that the secutex material can be stretched to 500% of its original length without tearing.

Exceptional elasticity

In comparison with regular rubber, secutex offers significantly higher elasticity. Even under extreme temperature fluctuations - secutex remains elastic.

Extreme wear resistance

secutex is almost impossible to break down. In terms of resistance to wear through water, secutex is better than many metals.

01.5 SECUTEX EDGE PROTECTORS

Edge protection for chains

Edge protection for chains

Hinged edge protector for chains

[SK-K]

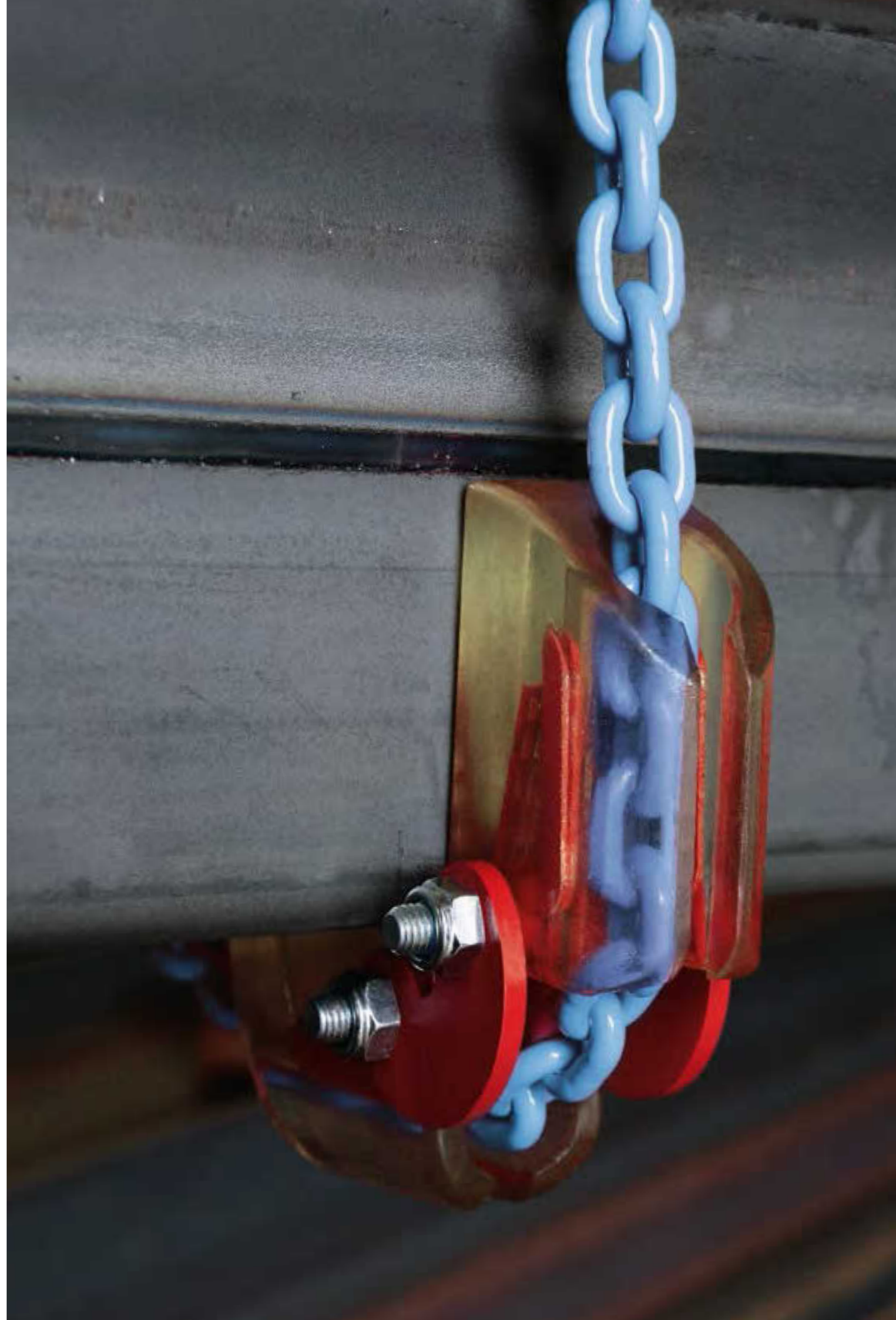
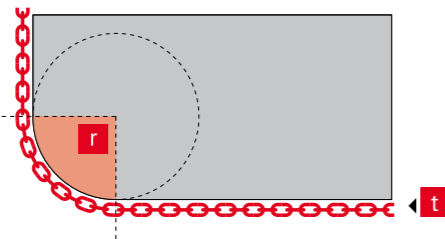
The attachment chain may only be used as an attachment accessory without edge protection if a 20% reduction in load lifting capacity is taken into consideration or if the next-largest chain thickness is used. Otherwise, a secutex SK-K hinged edge protector must be used.

A „sharp edge“ exists when the edge radius is smaller than the nominal thickness of the lashing chain. Further information is available in the „Sharp edge“ chapter.

The advantages

- The chain slides through the secutex clip
- Adapts optimally to the load geometry
- Does not fall off the chain even when knocked

Version	Nominal chain thickness [mm]	Bracket length [mm]
SK-K	6 - 32	80 - 260



Simple edge protector for lashing chains

[SK-KE]

Even when securing the load, the lashing chain must be protected against the „sharp edge“. High-value loads may not be damaged by lashing chains. The secutex SK-KE simple edge protector is simply placed onto the chain via the slit on the reverse side, making it impossible to lose. The edge protector is light and flexible. Due to the low dead-weight and flexible textile reinforcement, the edge protector can be attached easily and quickly to the load.

The advantages

- Particularly budget-friendly
- Low dead-weight
- Easy installation

Version	Nominal chain thickness [mm]	Bracket length [mm]
SK-KE	6 - 10	100 - 150

Important note: The secutex SK-KE simple edge protector is not intended for sustained use.

secutex edge protector
Technical data and order overview

01.5 SECUTEX EDGE PROTECTORS

Edge protector for lifting straps [SWH]
 Hinged edge protector [SK-B]
 SecuWave edge protector [SWK]
 Hinged edge protector for chains [SK-K]

Edge protector for lifting straps [SWH]

Type A	Strap width max. [mm]	Magnets per bracket
without magnet attachment		
SWH-30-A	30	0
SWH-60-A	60	0
SWH-65-A	65	0
SWH-90-A	90	0
SWH-100-A	100	0
SWH-120-A	120	0
SWH-125-A	125	0
SWH-150-A	150	0
SWH-180-A	180	0
SWH-200-A	200	0
SWH-240-A	240	0
SWH-300-A	300	0

Type B	Strap width max. [mm]	Magnets per bracket
Magnet attachment 1 Bracket		
SWH-30-B	30	1
SWH-60-B	60	1
SWH-65-B	65	1
SWH-90-B	90	1
SWH-100-B	100	1
SWH-120-B	120	1
SWH-125-B	125	1
SWH-150-B	150	2
SWH-180-B	180	2
SWH-200-B	200	2
SWH-240-B	240	3
SWH-300-B	300	3

Type C	Strap width max. [mm]	Magnets per bracket
Magnet attachment 2 Brackets		
SWH-30-C	30	1
SWH-60-C	60	1
SWH-65-C	65	1
SWH-90-C	90	1
SWH-100-C	100	1
SWH-120-C	120	1
SWH-125-C	125	1
SWH-150-C	150	2
SWH-180-C	180	2
SWH-200-C	200	2
SWH-240-C	240	3
SWH-300-C	300	3

Hinged edge protector for lifting straps [SK-B]

Type A	Strap width max. [mm]	Magnets per bracket
SK-B-30-A	30	0
SK-B-60-A	60	0
SK-B-90-A	90	0
SK-B-120-A	120	0
SK-B-150-A	150	0
SK-B-180-A	180	0
SK-B-240-A	240	0
SK-B-300-A	300	0

Type B	Strap width max. [mm]	Magnets per bracket
SK-B-30-B	30	1
SK-B-60-B	60	1
SK-B-90-B	90	1
SK-B-120-B	120	1
SK-B-150-B	150	2
SK-B-180-B	180	2
SK-B-240-B	240	3
SK-B-300-B	300	3

Shackle with magnetic attachment, 1 shackle without magnetic attachment

Type C	Strap width max. [mm]	Magnets per bracket
SK-B-30-C	30	1
SK-B-60-C	60	1
SK-B-90-C	90	1
SK-B-120-C	120	1
SK-B-150-C	150	2
SK-B-180-C	180	2
SK-B-240-C	240	3
SK-B-300-C	300	3

Both shackles with magnetic attachment

SecuWave edge protector [SWK]

Without magnet attachment	Strap width max. [mm]	Magnets per bracket
SWK-200	200	300
SWK-250	250	300
SWK-300	300	400
SWK-400	400	400
SWK-500	500	500
SWK-600	600	500

Hinged edge protector for chains [SK-K]

	Nominal chain thickness [mm]	Width [mm]	Bracket length [mm]
SKK-6	6	32	80
SKK-8	8	44	95
SKK-10	10	54	110
SKK-13	13	65	140
SKK-16	16	80	160
SKK-20	20	90	180
SKK-22	22	100	200
SKK-32	32	130	260

01.5 SECUTEX EDGE PROTECTORS

SK-D Gelenkkantenschoner für Drahtseile

Hinged edge protector for cables [SK-D]

	Nominal cable thickness [mm]	Width [mm]	Bracket length [mm]
SKD-16	16	32	80
SKD-24	24	44	95
SKD-32	32	54	110
SKD-40	40	65	140
SKD-48	48	80	160
SKD-60	60	100	200
SKD-80	80	140	280
SKD-100	100	170	340
SKD-120	120	180	360
SKD-150	150	220	400
SKD-2-60	60	180	360
SKD-2-80	80	260	520
SKD-2-100	100	320	640
SKD-2-120	120	340	680
SKD-2-150	150	420	400

01.5 SECUTEX EDGE PROTECTORS

simple edge protector for lashing straps
 simple edge protector for lashing chains
 simple edge protector for cables
 Powerflex pad with Velcro closure

Simple edge protector for lashing straps [SK-BE]

	Strap width max. [mm]	Bracket length [mm]
SK-BE-35	35	100
SK-BE-50	50	125
SK-BE-75	75	150

Simple edge protector for lashing chains [SK-KE]

	Nominal chain thickness [mm]	Internal diameter [mm]	Bracket length [mm]
SK-KE-6	6	20	100
SK-KE-8	8	27	125
SK-KE-10	10	36	150

Simple edge protector for cables [SK-DE]

	Nominal cable thickness [mm]	Internal diameter [mm]	Bracket length [mm]
SK-DE-8	8	10	50
SK-DE-10	10	12	75
SK-DE-12	12	14	100
SK-DE-14	14	16	125

Powerflex pad with Velcro closure

	width [mm]	length [mm]
P2P-120 [1- bis 6lagig erhältlich]	120	300
P2P-150 [1- bis 6lagig erhältlich]	150	300
P2P-180 [1- bis 6lagig erhältlich]	180	300
P2P-240 [1- bis 6lagig erhältlich]	240	300
P2P-300 [1- bis 6lagig erhältlich]	300	300
P2P-480 [1- bis 6lagig erhältlich]	480	600
P2P-600 [1- bis 6lagig erhältlich]	600	600

01.5 SECUTEX EDGE PROTECTORS

Gelenkkantenschoner f. Drahtseile [SKDS]
 secutex-Wendematte [SPG-WP]

Hinged edge protector for cables [SKDS]

	Nominal cable thickness [mm]	Width [mm]	Bracket length [mm]
Aluminium [magnet attachment 2 brackets]			
SKDS-S-20	20	25	50
SKDS-S-25	25	40	80
SKDS-S-30	30	50	100
SKDS-S-40	40	60	120
SKDS-S-50	50	70	140
Steel [without magnet attachment]			
SKDS-S-20	20	25	50
SKDS-S-25	25	40	80
SKDS-S-30	30	50	100
SKDS-S-40	40	60	120
SKDS-S-50	40	70	140
SKDS-S-80	80	100	200

secutex turning mat [SPG-WP]

	length [mm]	thickness [mm]	width [mm]
SPG-WP-400-30	400 500 600 700 800 900 1000 bis max. 2000	30	400
SPG-WP-500-30	400 500 600 700 800 900 1000 bis max. 2000	30	500
SPG-WP-600-30	400 500 600 700 800 900 1000 bis max. 2000	30	600
SPG-WP-700-30	400 500 600 700 800 900 1000 bis max. 2000	30	700
SPG-WP-800-30	400 500 600 700 800 900 1000 bis max. 2000	30	800
SPG-WP-900-30	400 500 600 700 800 900 1000 bis max. 2000	30	900
SPG-WP-1000-30	400 500 600 700 800 900 1000 bis max. 2000	30	1000
SPG-WP-400-50	400 500 600 700 800 900 1000 bis max. 2000	50	400
SPG-WP-500-50	400 500 600 700 800 900 1000 bis max. 2000	50	500
SPG-WP-600-50	400 500 600 700 800 900 1000 bis max. 2000	50	600
SPG-WP-700-50	400 500 600 700 800 900 1000 bis max. 2000	50	700
SPG-WP-800-50	400 500 600 700 800 900 1000 bis max. 2000	50	800
SPG-WP-900-50	400 500 600 700 800 900 1000 bis max. 2000	50	900
SPG-WP-1000-50	400 500 600 700 800 900 1000 bis max. 2000	50	1000

01.5 SECUTEX EDGE PROTECTORS

secutex chain sleeve
secutex cable clip sleeve



The secutex chain sleeve protects the chain (sandblasting) and the operator. The protective sleeve is not suitable for intensive use and transporting sharp-edged components due to the high surface pressure and lack of reinforcement. Please note: chain protective sleeves are intended for chains of quality grade 8. For RUD-VIP chains please select the next-larger size secutex sleeve.

secutex chain sleeve

	suitable for:	height [mm]	width [mm]
SK-6	6-8	27	27
SK-8	8-8	33	33
SK-10	10-8	38	38
SK-13	13-8	50	50
SK-18	18-8	63	63
SK-20	20-8	74	74
SK-22	22-8	89	89
SK-6-2	6-8	27	50
SK-8-2	8-8	33	64
SK-10-2	10-8	38	76
SK-13-2	13-8	50	100
SK-18-2	18-8	63	126
SK-20-2	20-8	74	148
SK-22-2	22-8	89	178

secutex cable clip sleeve

	internal diameter [mm]	cable diameter [mm]	strands
SDC 10	10	8	1
SDC 12	12	10	1
SDC 14	14	12	1
SDC 16	16	14	1
SDC 18	18	16	1
SDC 20	20	18	1
SDC 22	22	20	1
SDC 24	24	22	1
SDC 8-2	8	6	2
SDC 10-2	10	8	2
SDC 12-2	12	10	2
SDC 14-2	14	12	2
SDC 16-2	16	14	2
SDC 18-2	18	16	2
SDC 20-2	20	18	2
SDC 22-2	22	20	2
SDC 24-2	24	22	2
SDC 26-2	26	24	2
SDC 28-2	28	26	2
SDC 30-2	30	28	2
SDC 36-2	36	32	2
SDC 40-2	40	38	2



The secutex cable clip sleeve protects the cable and user. The protective sleeve is not suitable for intensive use and transporting sharp-edged components due to the high surface pressure. Please note: actual external diameters often differ significantly from the nominal diameter.

01.5 SECUTEX EDGE PROTECTORS

secutex cable sleeve
Drahtseil-Schlauch

secutex cable sleeve

	internal diameter [mm]	cable diameter [mm]	strands
SD 8	8	6	1
SD 10	10	8	1
SD 12	12	10	1
SD 14	14	12	1
SD 16	16	14	1
SD 18	18	16	1
SD 20	20	18	1
SD 22	22	20	1
SD 24	24	22	1
SD 26	26	24	1
SD 28	28	26	1
SD 30	30	28	1
SD 36	36	32	1
SD 40	40	38	1
SD 8-2	8	6	2
SD 10-2	10	8	2
SD 12-2	12	10	2
SD 14-2	14	12	2
SD 16-2	16	14	2
SD 18-2	18	16	2
SD 20-2	20	18	2
SD 22-2	22	20	2
SD 24-2	24	22	2
SD 26-2	26	24	2
SD 28-2	28	26	2
SD 30-2	30	28	2
SD 36-2	36	32	2
SD 40-2	40	38	2

SpanSet Powerband with secuflex coating and roller assembly

	Width [mm]	load-bearing capacity [kg]
PB 2000-SX-RB	60	2000
PB 4000-SX-RB	120	4000
PB 6000-SX-RB	180	6000
PCS 4000-SX-RB	60	4000
PCS 8000-SX-RB	120	8000
PCS 12000-SX-RB	180	12000



The secutex cable clip sleeve protects the cable and user. The protective sleeve is not suitable for intensive use and transporting sharp-edged components due to the high surface pressure. Please note: actual external diameters often differ significantly from the nominal diameter.

www.secutex.com

Technical changes reserved. All rights reserved. No part of the catalogue may be reproduced in any form (print, photocopy, or other process) without written permission or processed, copied or distributed using electronic systems. This catalogue has been drawn up with due diligence;

SpanSet-secutex assumes no liability for errors or omissions.
D01–Main–Heben–1–08/14, 2014 SpanSet-secutex GmbH, Germany

**SpanSet-secutex
Sicherheitstechnik GmbH**

Am Forsthaus 33

52511 Geilenkirchen

Germany

Tel +49 (0)24 51 48 45 73-0

Fax +49 (0)24 51 48 45 73-119

info@secutex.de

www.secutex.de

Your SpanSet-secutex works representative