



IPU10

The IPU10 vertical lifting clamp is used for lifting, turning, moving or vertical transfer of sheet, plates, or fabrications from horizontal to vertical and down to horizontal (180°) as needed. The hinged hoisting eye allows for the clamp to place and lift the load from any direction, or with a multiple leg sling without side-loading the clamp.

Universal - for lifting in any direction

- Available in capacities of .5 thru 30 metric tons (Higher Working Load Limits are available upon request).
- Wide variety of jaw openings available: 0" to 6.1".
- Welded alloy steel body for strength and smaller size. Forged alloy components, where required.
- Individually Proof Tested to 2 times the Working Load Limit with certification.
- Company name (CrosbyIP), logo, Working Load Limit and jaw opening permanently stamped on body.
- Each product is individually serialized, with the serial number and Proof Load test date stamped on body. User manual with test certificate is included with each clamp.
- Available in a variety of styles:
 - IPU10 - Standard clamp for materials with a surface hardness to 363HV10 (345 HB).
 - IPU10J - Larger jaw opening.
 - IPU10S - For use with Stainless Steel material.
 - IPU10H - For use with materials with a surface hardness to 472HV10 (450 HB).
- Full 180° turning range for material transfer, turning or moving.
- Lock open, lock closed ability with latch for pretension on material and then release of material.
- Optional IP-5000 Stinger assembly available (see page 428). Allows for easy connection between the clamp and hoist hook.
- Minimum WLL of 10% of maximum WLL.
- For use with materials with a surface hardness to 279HV10. Only 5% minimum WLL is needed.
- Maintenance and repair kits are available.
- Manufactured by an ISO 9001 facility.
- All sizes are **RFID EQUIPPED**.



IPU10S

IPU10S: For use with Stainless Steel material.
IPU10H: For use with materials with a surface hardness to 47Rc (450 HB).

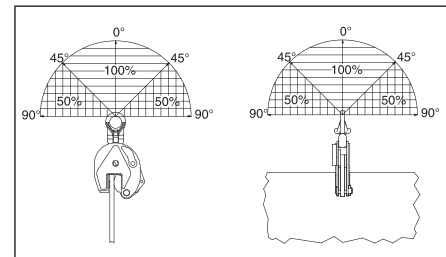
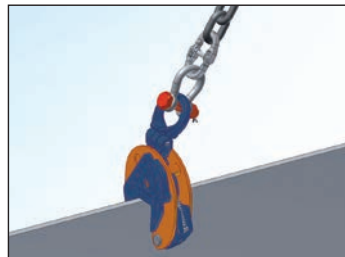
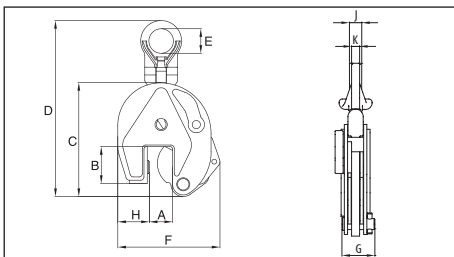


Load Rated

Model IPU10 / IPU10J / IPU10S / IPU10H

Model	Working Load Limit (t)*	IPU10 Stock No.	Weight Each (lbs.)	Dimensions (in.)									
				Jaw A	B	C	D	E	F	G	H	J	K
IPU10	0.25	2703850	4.19	0 - 0.63	1.73	5.12	8.50	1.57	4.53	1.65	1.10	-	0.43
IPU10	0.5	2701675	4.19	0 - 0.63	1.73	5.12	8.50	1.57	4.53	1.65	1.10	-	0.43
IPU10	1	2701663	5.29	0 - 0.75	1.77	5.47	8.86	1.57	5.00	1.65	1.50	-	0.43
IPU10	2	2701677	18.3	0 - 1.38	3.07	7.91	14.49	2.76	7.40	2.52	2.17	-	0.63
IPU10	3	2701665	32.6	0 - 1.56	3.94	9.96	17.17	2.95	8.74	3.07	2.36	-	0.79
IPU10	4.5	2701667	35.3	0 - 1.56	3.94	9.96	17.17	2.95	8.94	3.23	2.56	-	0.79
IPU10	6	2701669	52.9	0 - 2.00	4.96	11.89	20.67	3.15	11.50	3.31	3.74	1.73	0.79
IPU10	9	2701671	65.0	0 - 2.00	4.96	12.80	21.73	3.15	12.20	3.70	4.09	1.73	0.79
IPU10	12	2701679	126	0 - 2.13	6.30	15.43	24.25	3.15	17.05	4.76	5.39	1.61	0.98
IPU10	16	2701683	174	0.2 - 2.50	7.09	18.23	28.98	3.46	19.37	4.76	6.02	1.77	0.98
IPU10	22.5	2701687	278	0.2 - 3.13	8.74	21.81	33.98	4.33	22.24	5.47	7.32	1.93	0.98
IPU10	30	2701691	311	0.2 - 3.13	8.74	21.81	34.17	4.33	22.83	6.02	7.32	2.13	1.18
IPU10J	3	2702465	38.1	1.57 - 3.15	4.53	10.63	17.01	2.95	10.91	3.07	2.64	-	0.79
IPU10J	6	2702469	58.4	2.00 - 4.00	4.96	11.89	20.28	3.15	13.23	3.31	3.74	1.73	0.79
IPU10J	9	2701673	67.2	2.00 - 4.00	4.96	12.80	21.65	3.15	14.17	3.70	4.13	1.73	0.79
IPU10J	12	2701681	143	2.13 - 4.25	7.01	17.24	26.06	3.15	19.33	4.76	5.35	1.61	0.98
IPU10J	16	2701685	187	2.50 - 5.00	8.19	20.51	30.87	3.46	22.13	4.76	6.30	1.77	0.98
IPU10J	22.5	2701689	328	3.13 - 6.13	10.04	24.72	36.93	4.33	25.98	5.47	7.72	1.93	0.98
IPU10J	30	2701693	364	3.13 - 6.13	10.04	24.72	37.09	4.33	25.98	6.02	7.72	2.13	1.18
For stainless steel - with universal hoisting eye													
IPU10S	0.5	2702275	4.19	0 - 0.63	1.73	5.12	8.50	1.57	4.53	1.65	1.10	-	0.43
IPU10S	1	2702263	5.29	0 - 0.75	1.77	5.47	8.86	1.57	5.00	1.61	1.50	-	0.43
IPU10S	2	2702277	18.7	0 - 1.38	3.07	7.91	14.49	2.76	7.40	2.52	2.17	-	0.63
IPU10S	3	2702265	32.6	0 - 1.56	3.94	9.96	17.17	2.95	8.74	3.07	2.36	-	0.79
IPU10S	4.5	2702267	35.3	0 - 1.56	3.94	9.96	17.17	2.95	8.94	3.23	2.56	-	0.79
IPU10S	6	2702269	52.9	0 - 2.00	4.96	11.89	20.67	3.15	11.50	3.31	3.74	1.73	0.79
IPU10S	9	2702271	65.0	0 - 2.00	4.96	12.80	21.73	3.15	12.20	3.70	4.09	1.73	0.79
IPU10S	12	2702279	126	0 - 2.13	6.30	15.43	24.25	3.15	17.05	4.76	5.39	1.61	0.98
For very hard materials - with universal hoisting eye													
IPU10H	0.5	2702175	4.19	0 - 0.63	1.73	5.12	8.50	1.57	4.53	1.65	1.10	-	0.43
IPU10H	0.75	2702163	5.29	0 - 0.79	1.77	5.47	8.86	1.57	5.00	1.61	1.50	-	0.43
IPU10H	1	2702177	18.3	0 - 1.38	3.07	7.91	14.49	2.76	7.40	2.52	2.17	-	0.63
IPU10H	2	2702165	32.6	0 - 1.56	3.94	9.96	17.17	2.95	8.74	3.07	2.36	-	0.79
IPU10H	3	2702167	35.3	0 - 1.56	3.94	9.96	17.17	2.95	8.94	3.23	2.56	-	0.79
IPU10H	4.5	2702169	52.9	0 - 2.00	4.96	11.89	20.67	3.15	11.50	3.31	3.74	1.73	0.79
IPU10H	6	2702171	65.0	0 - 2.00	4.96	12.80	21.73	2.76	12.20	3.70	4.09	1.73	0.79

* Design Factor based on EN 13155 and ASME B30.20. Model IPU10R (remote control opening and closing via a cable) on request. Model IPU10W (wedge) available on request.



Vertical Clamps

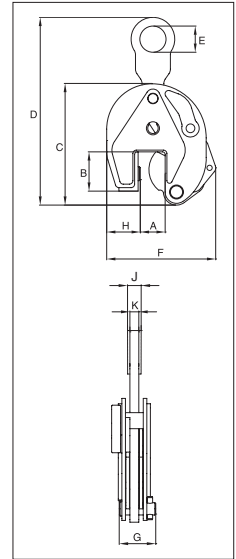


IP10

The IP10 vertical lifting clamp is used for the lifting, turning, moving or vertical transfer of sheet, plates, or fabrications from horizontal to vertical and down to horizontal (180°) as needed. Usually used as a single point pick or when used with a spreader beam with multiple vertical drop lines.

For vertical lifting, turning and transfer

- Available in capacities of .5 thru 30 metric tons (Higher Working Load Limits are available upon request).
- Wide variety of jaw openings available: 0 to 6.1".
- Welded alloy steel body for strength and smaller size. Forged alloy components, where required.
- Individually Proof Tested to 2 times the Working Load Limit with certification.
- Company name (Crosby/IP), logo, Working Load Limit and jaw opening permanently stamped on body.
- Each product is individually serialized, with the serial number and Proof Load test date stamped on body. User manual and test certificate included with each clamp.
- Available in a variety of styles:
 - IP10 - Standard clamp for materials with a surface hardness to 363HV10 (345 HB).
 - IP10J - Larger jaw opening.
 - IP10S - For use with Stainless Steel material.
 - IP10H - For use with materials with a surface hardness to 472HV10 (450 HB).
- Full 180° turning range for material transfer, turning or moving.
- Lock open, lock closed ability with latch for pretension on material and then release of material.
- Optional IP-5000 Stinger assembly available (see page 428). Allows for easy connection between the clamp and hoist hook.
- For plate surface hardness till 279HV10, only 5% min. WLL is needed.
- Maintenance and repair kits are available.
- Manufactured by an ISO 9001 facility.
- All sizes are **RFID EQUIPPED**.



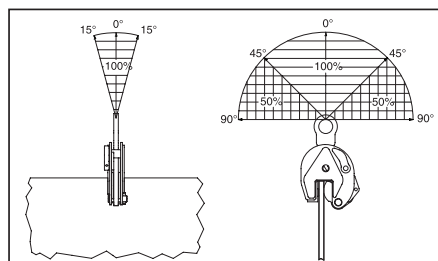
Model IP10 / IP10J / IP10S / IP10H

Model	Working Load Limit (t)*	IP10 Stock No.	Weight Each (lbs.)	Dimensions (in.)									
				Jaw A	B	C	D	E	F	G	H	J	K
IP10	0.25	2703958	3.97	0 - 0.63	1.73	5.12	7.99	1.57	4.53	1.65	1.10	-	0.43
IP10	0.5	2701674	3.97	0 - 0.63	1.73	5.12	7.99	1.57	4.53	1.65	1.10	-	0.43
IP10	1	2701662	4.85	0 - 0.75	1.77	5.47	8.35	1.57	5.00	1.65	1.50	-	0.43
IP10	2	2701676	16.8	0 - 1.38	3.07	7.91	12.99	2.76	7.40	2.52	2.17	-	0.63
IP10	3	2701664	30.4	0 - 1.56	3.94	9.96	17.09	2.95	8.74	3.07	2.36	-	0.79
IP10	4.5	2701666	33.1	0 - 1.56	3.94	9.96	17.09	2.95	8.94	3.23	2.56	-	0.79
IP10	6	2701668	51.8	0 - 2.00	4.96	11.89	20.35	3.15	11.50	3.31	3.74	1.57	0.79
IP10	9	2701670	60.6	0 - 2.00	4.96	12.80	17.52	3.15	12.20	3.70	4.09	1.73	0.98
IP10	12	2701678	108	0 - 2.13	6.30	15.43	22.60	3.15	17.05	4.76	5.39	1.61	0.98
IP10	16	2701682	150	0.25 - 2.50	7.09	18.23	27.01	3.46	19.37	4.76	6.02	1.93	0.98
IP10	22.5	2701686	243	0.25 - 3.13	8.74	21.81	31.81	4.33	22.24	5.47	7.32	1.93	0.98
IP10	30	2701690	273	0.25 - 3.13	8.74	21.81	31.61	4.33	22.24	6.02	7.32	2.13	1.18
IP10J	0.5	2701646	3.97	0.59 - 1.18	1.77	5.04	8.23	1.57	5.04	1.61	1.26	-	0.43
IP10J	6	2701705	54.0	2.00 - 4.00	4.96	11.89	19.92	3.15	13.23	3.31	3.74	1.57	0.79
IP10J	9	2701672	62.8	2.00 - 4.00	4.96	12.80	21.34	3.15	14.17	3.70	4.13	1.73	0.98
IP10J	12	2701680	128	2.13 - 4.25	7.01	17.24	24.41	3.15	19.33	4.76	5.35	1.61	0.98
IP10J	16	2701684	176	2.50 - 5.00	8.19	20.51	28.90	3.46	22.13	4.76	6.30	1.77	0.98
IP10J	22.5	2701688	289	3.13 - 6.13	10.04	24.72	34.76	4.33	25.98	5.47	7.72	1.93	0.98
IP10J	30	2701692	324	3.13 - 6.13	10.04	24.72	34.92	4.33	25.98	6.02	7.72	2.13	1.18
For stainless steel - with fixed hoisting eye													
IP10S	0.5	2702274	3.97	0 - 0.63	1.73	5.12	7.99	1.57	4.53	1.65	1.10	-	0.43
IP10S	1	2702262	16.8	0 - 1.38	1.77	5.47	8.35	1.57	5.00	1.65	1.50	-	0.43
IP10S	2	2702276	30.4	0 - 1.56	3.07	7.91	12.99	2.76	7.40	2.52	2.17	-	0.63
IP10S	3	2702264	33.1	0 - 1.56	3.94	9.96	17.09	2.95	8.74	3.07	2.36	-	0.79
IP10S	4.5	2702266	51.8	0 - 2.00	3.94	9.96	17.09	2.95	8.94	3.23	2.56	-	0.79
IP10S	6	2702268	60.6	0 - 2.00	4.96	11.89	20.35	3.15	11.50	3.31	3.74	1.57	0.79
IP10S	9	2702270	60.6	0 - 2.00	4.96	12.80	21.42	3.15	12.20	3.70	4.09	1.73	0.98
IP10S	12	2702278	108	0 - 2.13	6.30	15.43	22.60	3.15	17.05	4.76	5.39	1.61	0.98
For very hard materials - with fixed hoisting eye													
IP10H	0.5	2702174	3.97	0 - 0.63	1.73	5.12	8.15	1.57	4.53	1.65	1.10	-	0.43
IP10H	0.75	2702162	4.85	0 - 0.81	1.77	5.47	8.62	1.57	5.12	1.10	1.50	-	0.43
IP10H	1.0	2702176	16.8	0 - 1.38	3.07	7.91	12.99	2.76	7.40	2.52	2.17	-	0.63
IP10H	2.0	2702164	30.4	0 - 1.56	3.94	9.96	17.09	2.95	8.74	3.07	2.36	-	0.79
IP10H	3.0	2702166	33.1	0 - 1.56	3.94	9.96	17.09	2.95	8.94	3.23	2.56	-	0.79
IP10H	4.5	2702168	51.8	0 - 2.00	4.96	11.89	20.35	3.15	11.50	3.31	3.74	1.57	0.79
IP10H	6.0	2702170	60.6	0 - 2.00	4.96	12.80	21.42	3.15	12.20	3.62	4.13	1.73	0.98
IP10H	25.0	2703530	163	0 - 2.36	6.65	1.57	-	1.85	7.24	12.60	8.66	0.98	3.43

* Design Factor based on EN 13155 and ASME B30.20.

Model IP10 available in 40t, 55t and 100t on request.

Model IP10R (remote control opening and closing via a cable) available on request.





IPNM10N

The IPNM10N vertical lifting clamp is used for lifting, turning, moving or vertical transfer of sheet, plates, or fabrications from horizontal to vertical and down to horizontal (180°) as needed without marring the surface of the material. Materials such as aluminum, stainless steel, painted materials, aircraft skins, composite material, glass, plastic, etc., can be lifted without marring.

Will not mar, or scratch the material surface.

For use in almost all sectors of industry where, during the lift or transfer, no damage to the material is permitted.

- Available in capacities of .5 , 1 and 2 metric tons.
- Wide variety of jaw openings available: 0" to 1.57"
- Welded alloy steel body for strength and smaller size. Forged alloy components, where required.
- Individually Proof Tested to 2 times the Working Load Limit with certification.
- Company name (CrosbyIP), logo, Working Load Limit and jaw opening permanently stamped on body.
- Each product is individually serialized, with the serial number and Proof Load test date stamped on body. User manual with test certificate is included with each clamp.
- Full 180° turning range for material transfer, turning or moving.
- Lock open, lock closed ability with latch for pretension on material and then release of material.
- Optional IP-5000 Stinger assembly available (see page 428). Allows for easy connection between the clamp and hoist hook.
- Material must be clean and dry.
- Maintenance replacement kits are available.
- Manufactured by an ISO 9001 facility.
- All sizes are **RFID EQUIPPED**.



IPNM10P

The IPNM10P vertical lifting clamp is used for lifting, turning, moving or vertical transfer of sheet, plates, or fabrications from horizontal to vertical and down to horizontal (180°) as needed without marring the surface of the material. Materials such as aluminum, stainless steel, painted materials, aircraft skins, composite material, glass, plastic, etc., can be lifted without marring. The protective cover reduces the risk of damage to surrounding plates.

Will not mar, or scratch the material surface.

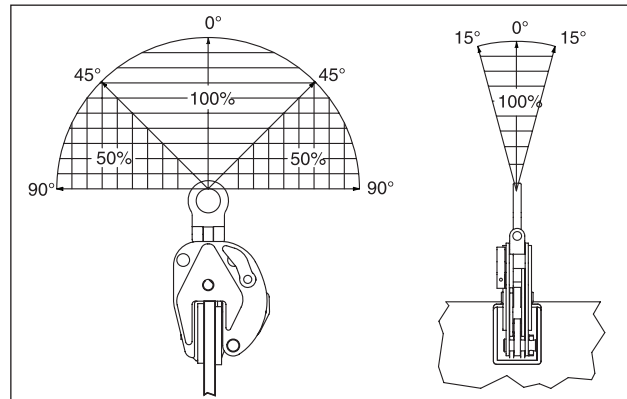
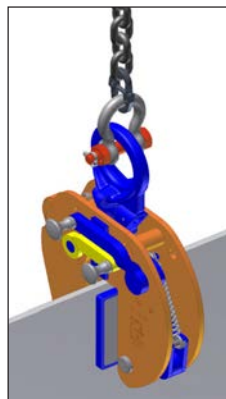
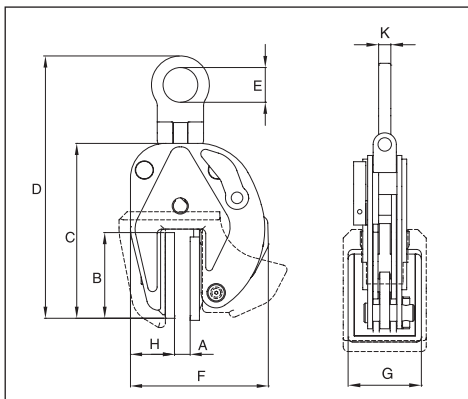


Load Rated

Model IPNM10

Model	Working Load Limit (t)*	IPNM10 Stock No.	Weight Each (lbs.)	Dimensions (in.)								
				Jaw A	B	C	D	E	F	G	H	K
IPNM10N	0.5	2703811	5.95	0 - 0.38	3.31	6.26	9.25	1.57	5.04	2.36	1.61	0.43
IPNM10N	1	2703738	9.70	0 - 0.81	3.82	8.23	10.94	1.57	7.24	3.15	2.20	0.43
IPNM10	2	2703442	32.0	0 - 1.56	6.02	10.16	15.59	2.76	11.65	3.94	6.34	0.63
With protection cap												
IPNM10P	0.5	2703278	6.17	0 - 0.38	3.23	6.18	8.70	1.57	5.71	2.68	1.89	0.43
IPNM10P	1	2703279	9.92	0 - 0.81	3.82	7.68	10.87	1.57	8.07	3.23	2.60	0.43
With larger jaw opening												
IPNM10NJ	1	2703814	10.4	0.81 - 1.44	3.82	8.66	12.64	1.57	7.87	3.15	2.20	0.43
IPNM10NJ1	1	2703819	12.1	0 - 1.00	3.82	9.37	13.82	1.57	8.39	3.15	2.48	0.43

* Design Factor based on EN 13155 and ASME B30.20.



Vertical Clamps

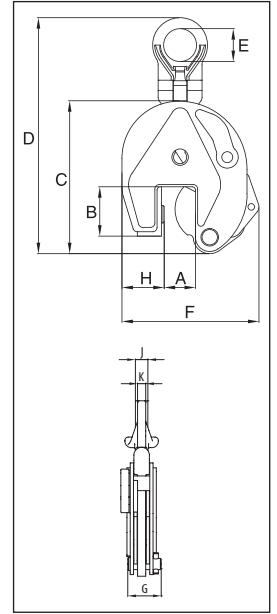


IPU10A

The IPU10A automatically clicks on to the material as soon as the clamp is placed on the plate. The fact that the safety lock remains in position as the clamp closes precludes hazardous situations. Fastening the IPU10A clamp in places that are difficult to reach is no problem.

For vertical transport of plates

- Available in capacities of 1 and 2 metric tons.
- Jaw openings available: 0" to 1.97".
- Welded alloy steel body for strength and smaller size. Forged alloy components where required.
- Individually Proof Tested to 2 times the Working Load Limit with certification.
- Company name (CrosbyIP), logo, Working Load Limit and jaw opening permanently stamped on body.
- Each product is individually serialized, with the serial number and Proof Load test date stamped on body. User manual with test certificate is included with each clamp.
- Available in a variety of styles: Full 180° turning range for material transfer, turning or moving.
- Lock open, lock closed ability with latch for pretension on material and then release of material.
- Optional IP-5000 Stinger assembly available (see page 428). Allows for easy connection between the clamp and hoist hook.
- Minimum WLL of 10% of Maximum WLL.
- Maintenance replacement parts are available.
- Manufactured by an ISO 9001 facility.
- All sizes are **RFID EQUIPPED**.

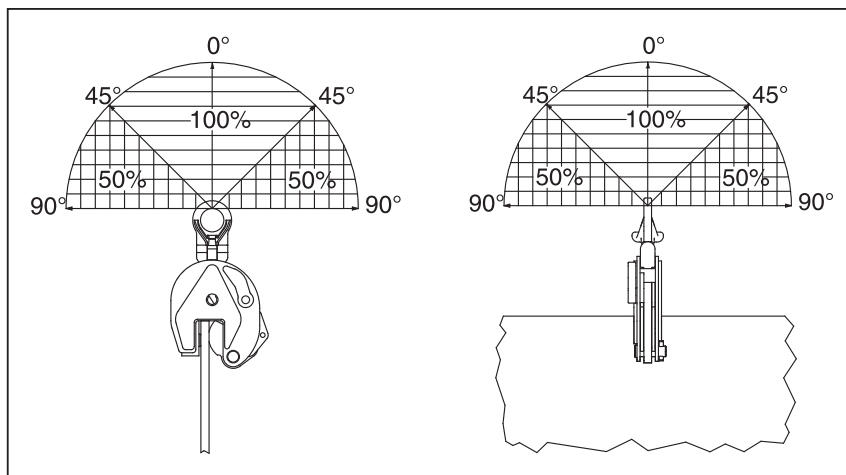


Load Rated

Model IPU10A

Model	Working Load Limit (t)*	IPU10A Stock No.	Weight Each (lbs.)	Dimensions (in.)									
				Jaw A	B	C	D	E	F	G	H	J	K
IPU10A	1	2701628	5.07	0 - 0.81	1.77	5.47	8.86	1.57	5.00	1.65	1.50	-	0.43
IPU10A	2	2701629	18.5	0 - 1.38	3.07	7.91	14.49	2.76	7.40	2.52	2.17	-	0.63
IPU10A	6	2701638	56.0	0 - 2.00	4.96	11.89	20.67	3.15	11.50	3.31	3.74	1.73	0.79

* Design Factor based on EN 13155 and ASME B30.20.



Crosby Lifting Clamps